

Test Report No. 16-003857-PR01 (PB-K20-06-en-01) dated 26.01.2017  
Client: PROFITIM d.o.o., 18000 18000 Nis (Serbia)

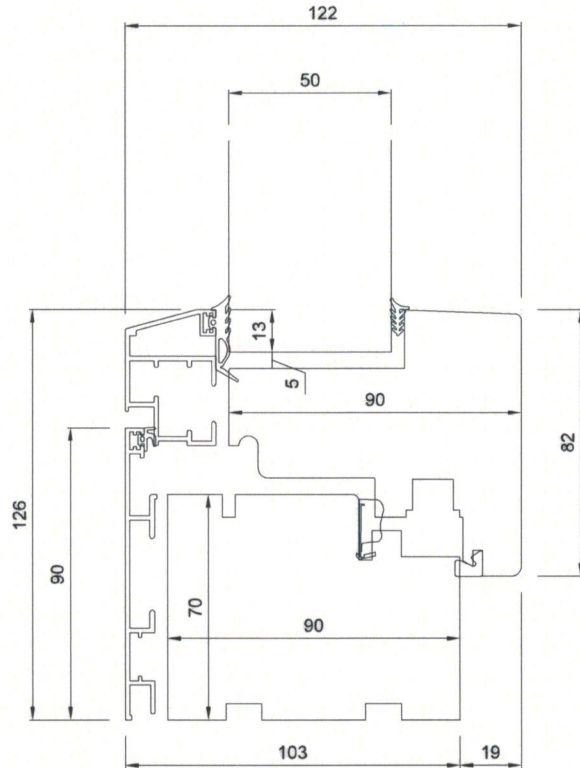


Fig 1: Cross section test specimen PK01

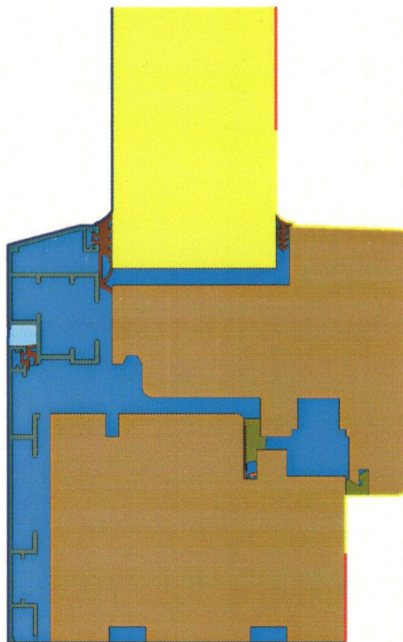


Fig 2: Simulation model test specimen PK01 -  $U_T$ -calculation

Test Report No. 16-003857-PR01 (PB-K20-06-en-01) dated 26.01.2017  
Client: PROFI TIM d.o.o., 18000 18000 Nis (Serbia)

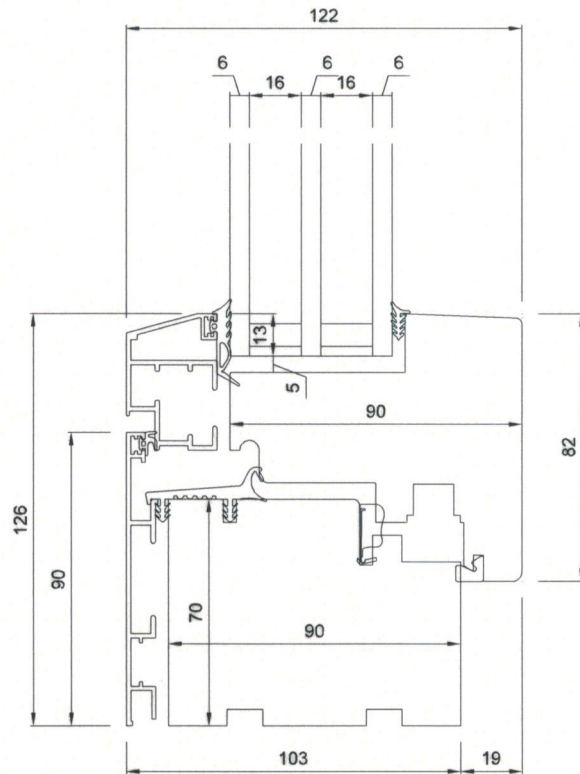


Fig 3: Cross section test specimen PK02 / PK03

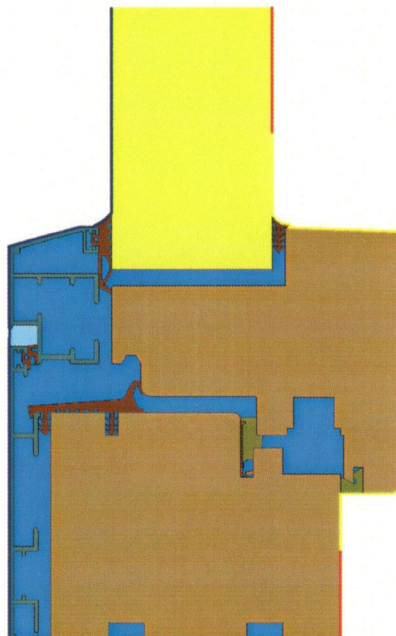


Fig 4: Simulation model test specimen PK02 -  $U_T$ -calculation

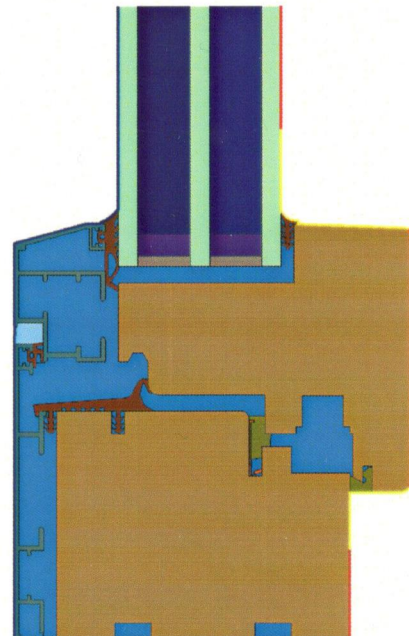


Fig 5: Simulation model test specimen PK03 -  $\Psi$ -calculation

Test Report No. 16-003857-PR01 (PB-K20-06-en-01) dated 26.01.2017  
Client: PROFI TIM d.o.o., 18000 18000 Nis (Serbia)

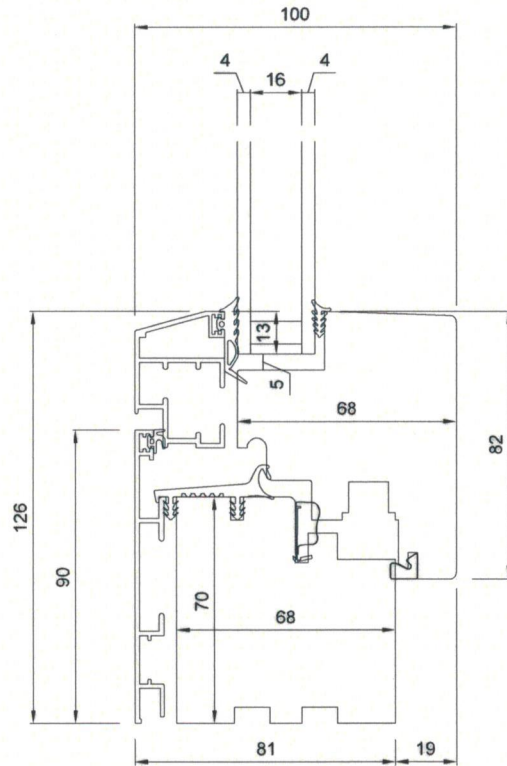


Fig 6: Cross section test specimen PK04 / PK05

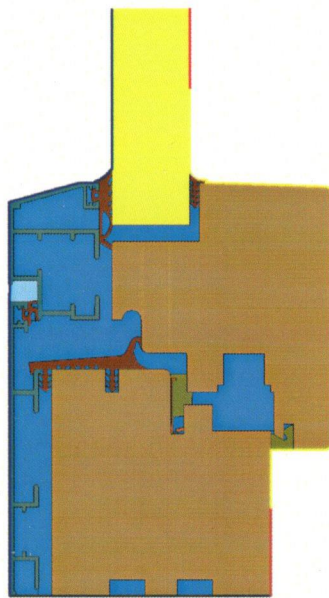


Fig 7: Simulation model test specimen PK04 -  $U_T$ -calculation

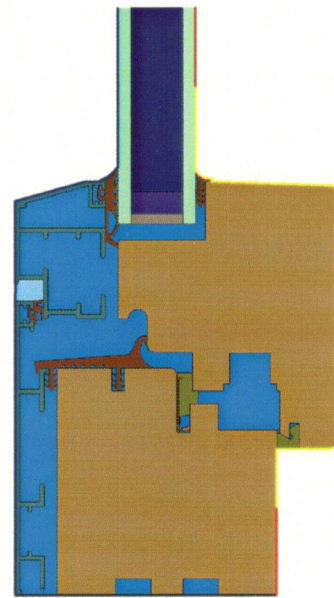


Fig 8: Simulation model test specimen PK05 -  $\Psi$ -calculation